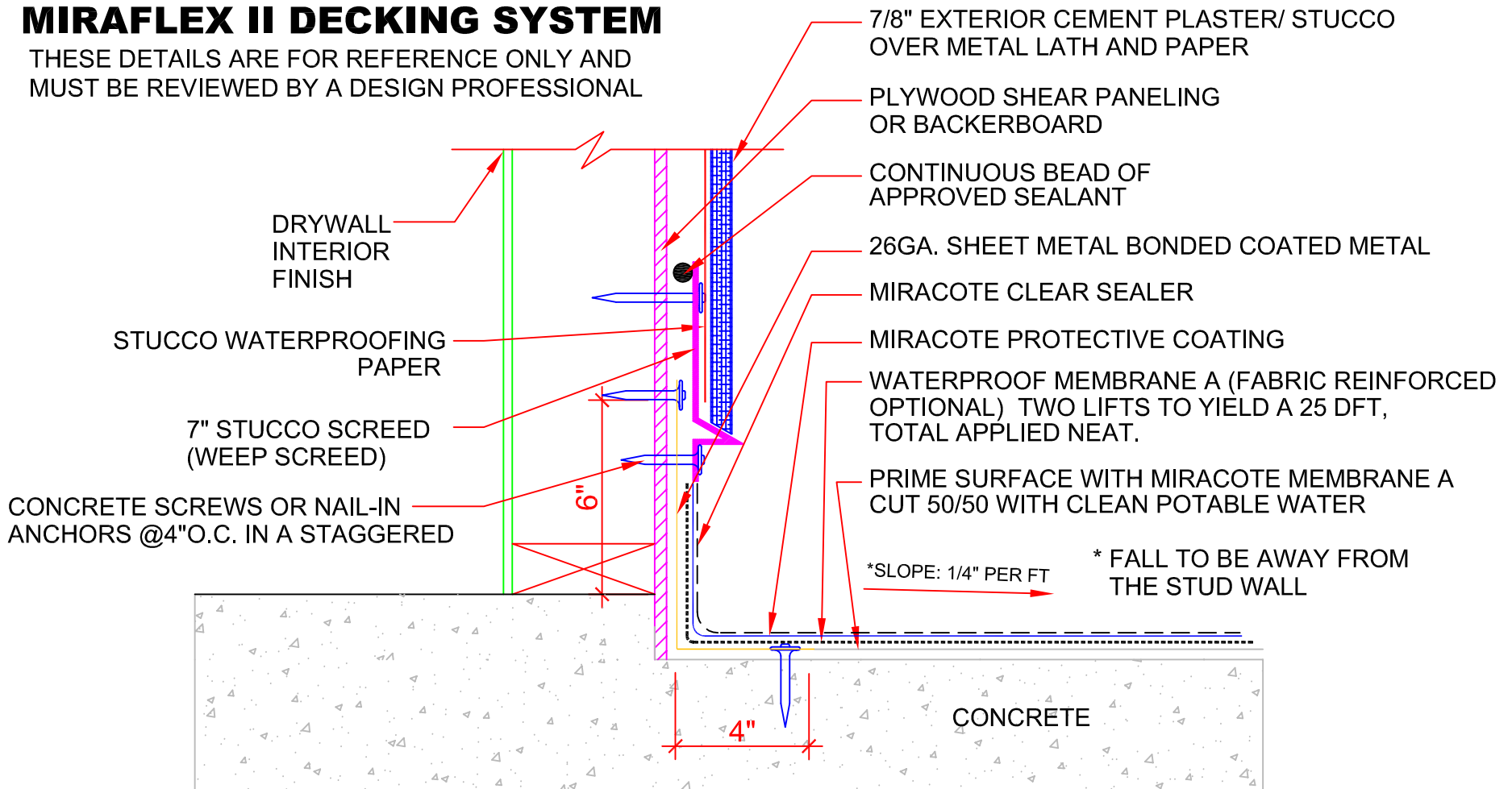




MIRAFLEX II DECKING SYSTEM

THESE DETAILS ARE FOR REFERENCE ONLY AND MUST BE REVIEWED BY A DESIGN PROFESSIONAL



OPTIONAL:

Pitch or Smoothing Course of Underlayment can be applied as needed over the primed concrete surface, if surface is pitched to drain at a minimum of 1/4 inch per foot in any direction, and substrate is per manufacturer's requirements ready to receive membrane, this step is not required.

IMPORTANT:

CONSULT CROSSFIELD PRODUCTS CORP FOR ADDITIONAL INFORMATION REGARDING CONCRETE/MASONRY SUBSTRATES AND INSULATION INSTALLATION

Structural Grade Concrete Substrate at Wood or Metal Stud Wall Detail #3A