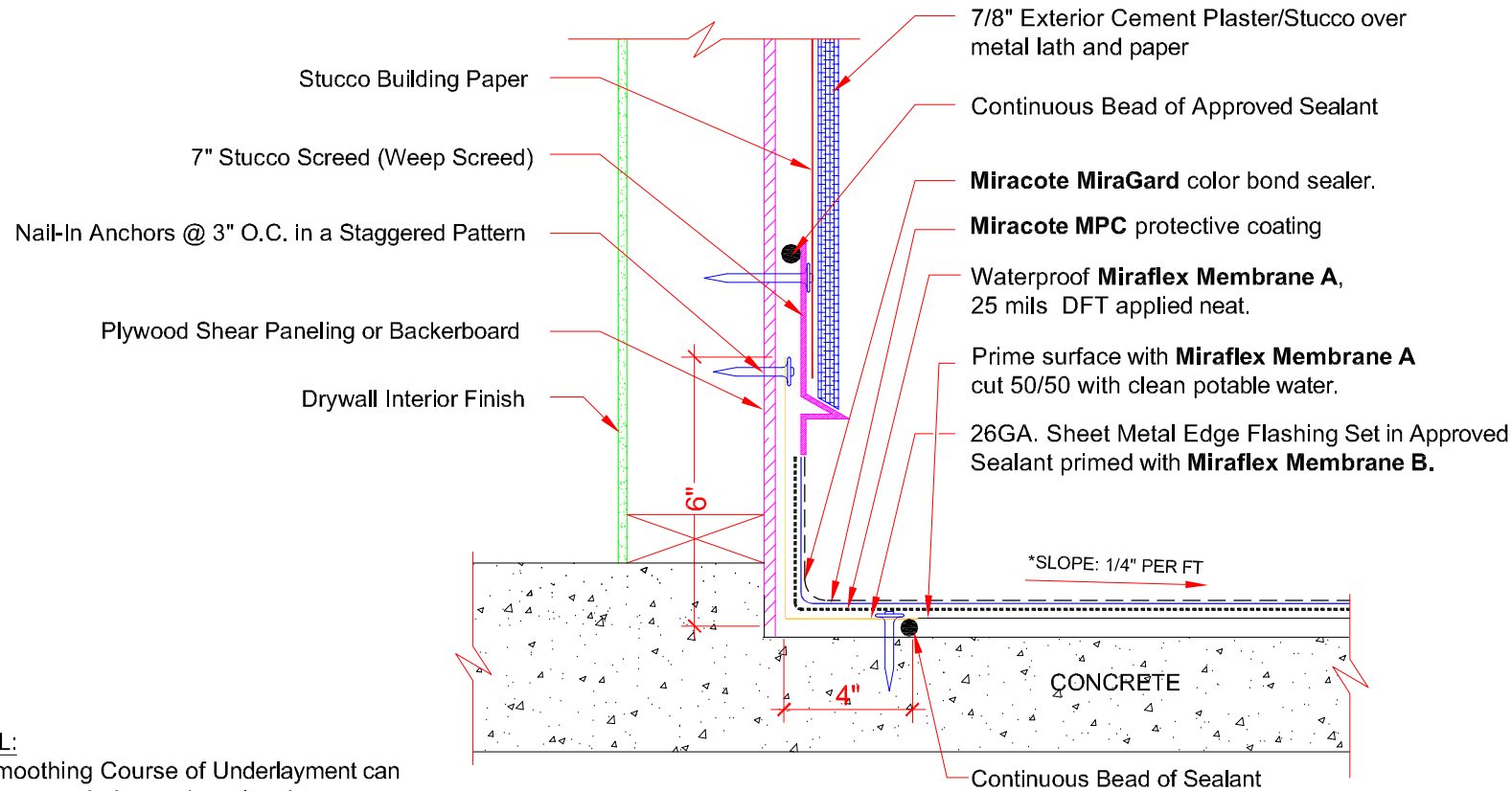




## MIRAFLEX II DECKING SYSTEM

THESE DETAILS ARE FOR REFERENCE ONLY AND  
MUST BE REVIEWED BY A DESIGN PROFESSIONAL

**IMPORTANT:**  
CONSULT CROSSFIELD PRODUCTS CORP FOR  
ADDITIONAL INFORMATION REGARDING  
CONCRETE/MASONRY SUBSTRATES AND  
INSULATION INSTALLATION.



### OPTIONAL:

Pitch or Smoothing Course of Underlayment can be applied as needed over the primed concrete surface, if surface is pitched to drain at a minimum of 1/4 inch per foot in any direction, and substrate is per manufacturer's requirements it is ready to receive membrane and additional sloping is not required.

\* FALL TO BE AWAY FROM THE STUD WALL

## Structural Grade Concrete Substrate at Wood or Metal Stud Wall Detail #3A

